

HSS Horse Show Software

Networking Reference Manual
For Windows 2000

Copyright © 2003
TimeSlice Technologies Corporation
All Rights Reserved

<http://www.timeslice.ca>

<http://www.HorseShowsOnline.com>

Table of Contents

Introduction	1
DCOM Configuration.....	1
DCOM Main configuration screen.....	2
DCOM settings for the HSS server	3
HSS Server General Settings.....	4
DCOM HSS application location:.....	5
DCOM HSS HSS Server Launch and Access permissions	6
Settings for “Access permissions”, and “Launch permissions”	7
Setting the Identity under which the HSS Server runs	8
Accessing the HSS server from your client workstations:	9

HSS Networking Guide

Introduction

Networking any application and set of computers is always challenging. Before you can expect to successfully set up HSS for multi user operation you must ensure that your network is operational. This document is not intended to teach you how to connect and configure a computer network. It IS intended to show you how to configure HSS to operate on a network that is already operating correctly.

To enable networking and multi user support for HSS, you must carefully apply the following settings.

1. Designate a Windows 2000 or Windows XP computer as the server computer. The "Server" is the computer where the data will be stored and central processing occurs. In general this computer should NOT be used as a workstation. You can also use a Windows NT 4.0 (Service pack 6 or higher) computer as the server.
2. Install HSS on the server computer
3. Start HSS on the server computer to allow it to create the default databases
4. Exit from HSS on the server computer
5. On the Server computer, create user accounts for each user that will access the HSS system. The password and User ID should be EXACTLY the same as the user will use to log on to the workstation they will be using. This is done via "Start button / Settings / Control panel / Computer management / Local users and groups". When you create the user records make sure to assign sufficient privileges so they can access the data. You can ensure they can access the data by making each user a member of the "Administrators" group (NOTE: This may not be appropriate in all situations since from a security perspective).
6. On the server, share the folder (or the entire drive) where HSS is installed and make sure the users you have entered will have sufficient read / write access to the folder.

DCOM Configuration

The next portion of HSS Network setup configures the DCOM setting on the server to allow access from workstations to the HSS server system. DCOM ("Distribution Component Object Model") is a Microsoft technology that allows software components to communicate across a network.

Start the DCOM configuration utility:

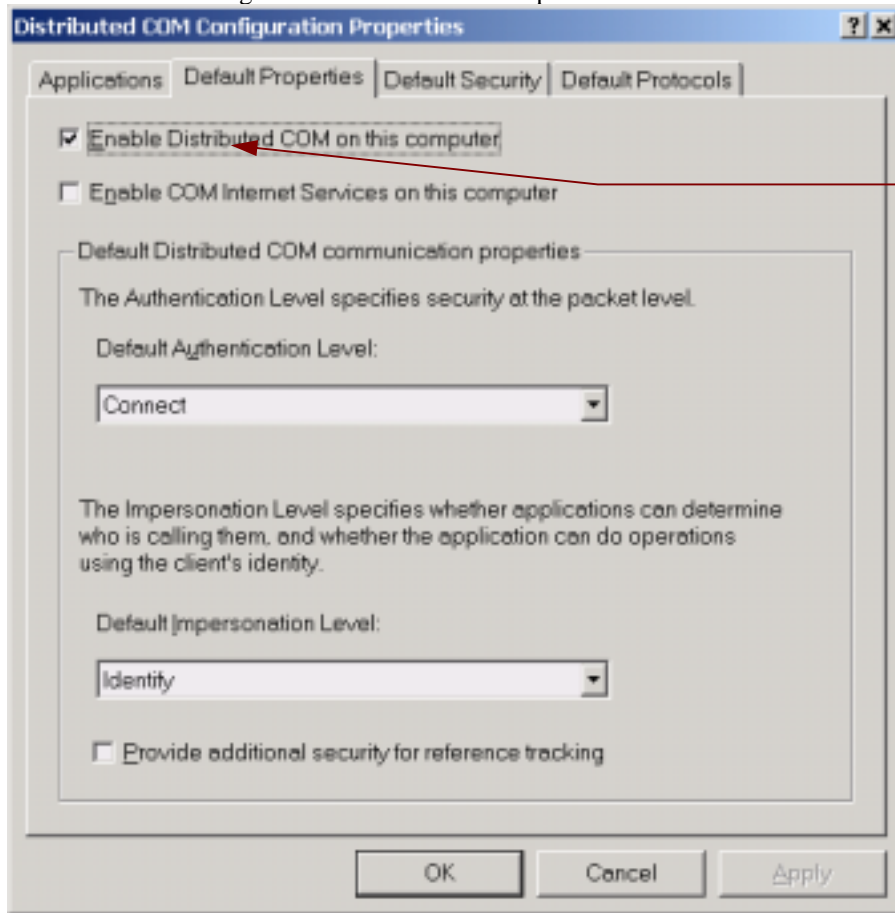
1. Click the "Start" button on the task bar
2. Click "Run"
3. In text box, enter the word DCOMCNFG and then click the OK button.

The DCOM configuration should start within a few seconds. It may prompt you to add some missing information to the registry and you can respond OK to allow that to occur.

HSS Networking Guide

DCOM Main configuration screen

Make sure each setting is set as show in the example below:



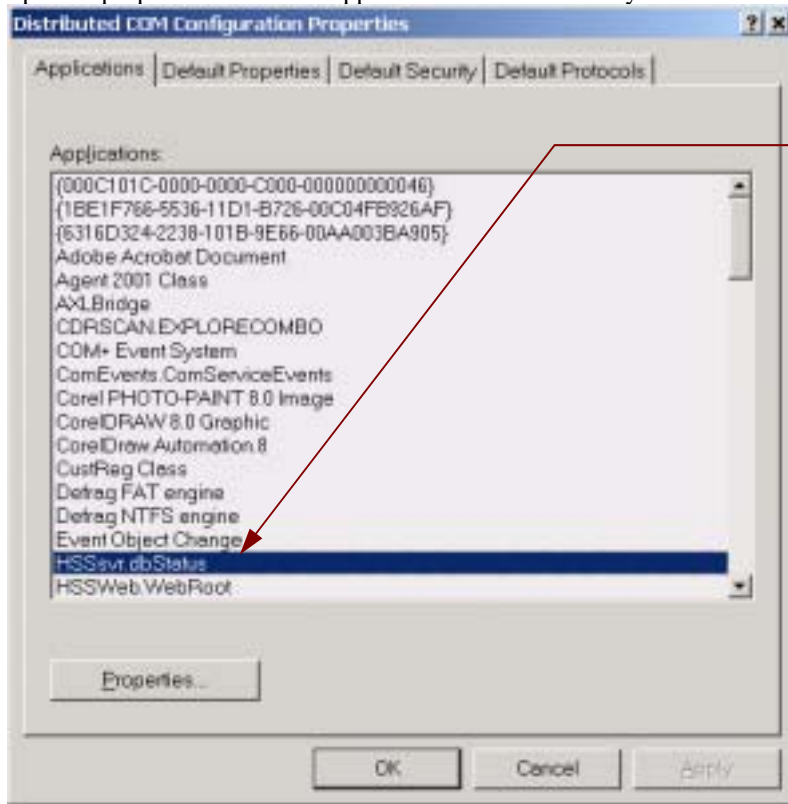
Make sure that DCOM is enabled for this computer. It must show a CHECKMARK here.

Figure 1 - DCOM Default properties

HSS Networking Guide

DCOM settings for the HSS server

Specific properties need to be applied to the HSS Server system. Select “HSSsvr” from the list and click the “Properties” button.



Look in the list for the **first** HSSsvr object. Usually it is named HSSsvr.dbStatus, but it could be different. Just select the first one that says **HSSsvr**

Click on it and then click the “Properties” button to open the setting for the HSS Server object.

Figure 2 - Selecting HSS server object

HSS Networking Guide

HSS Server General Settings

Select Connect as the authentication level as shown below

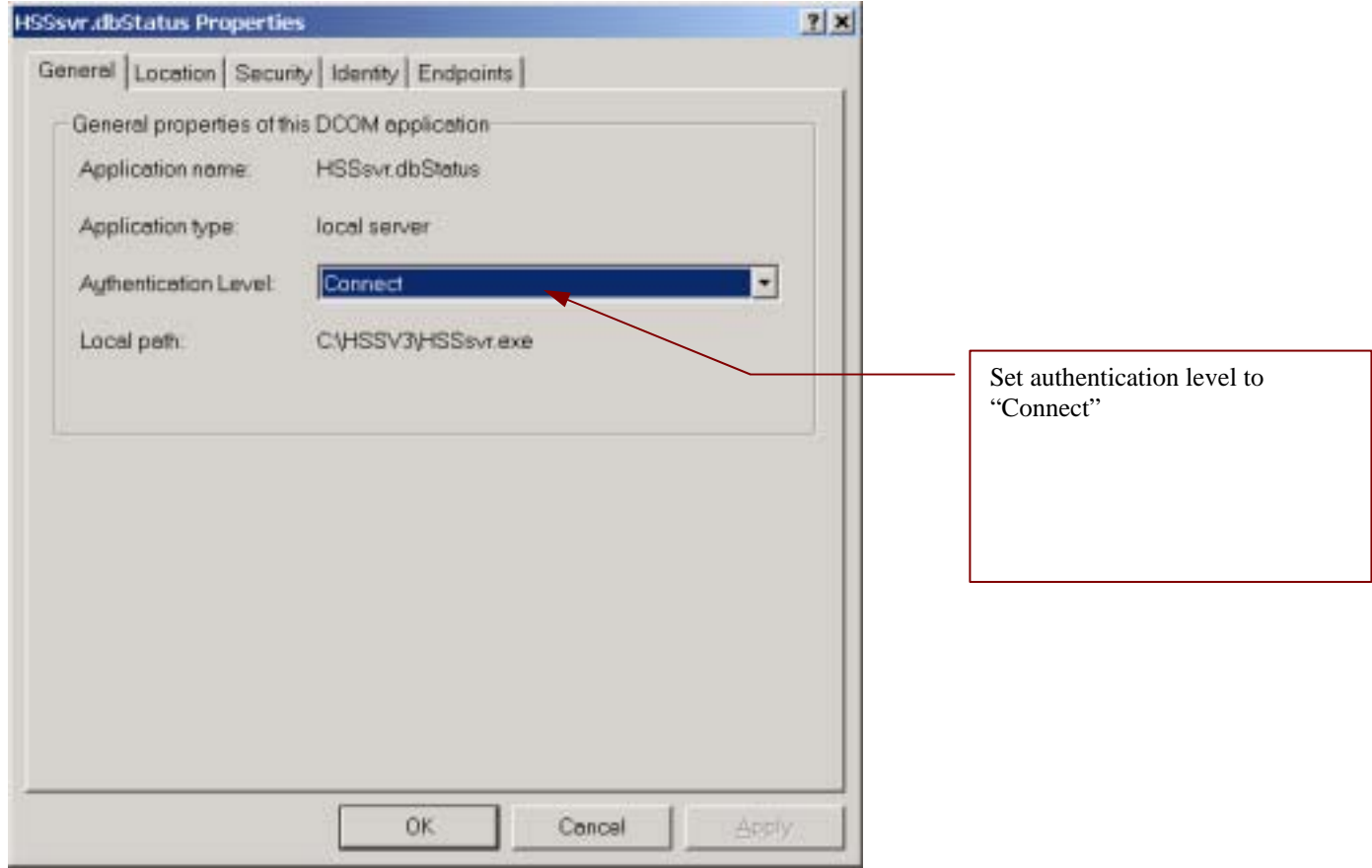
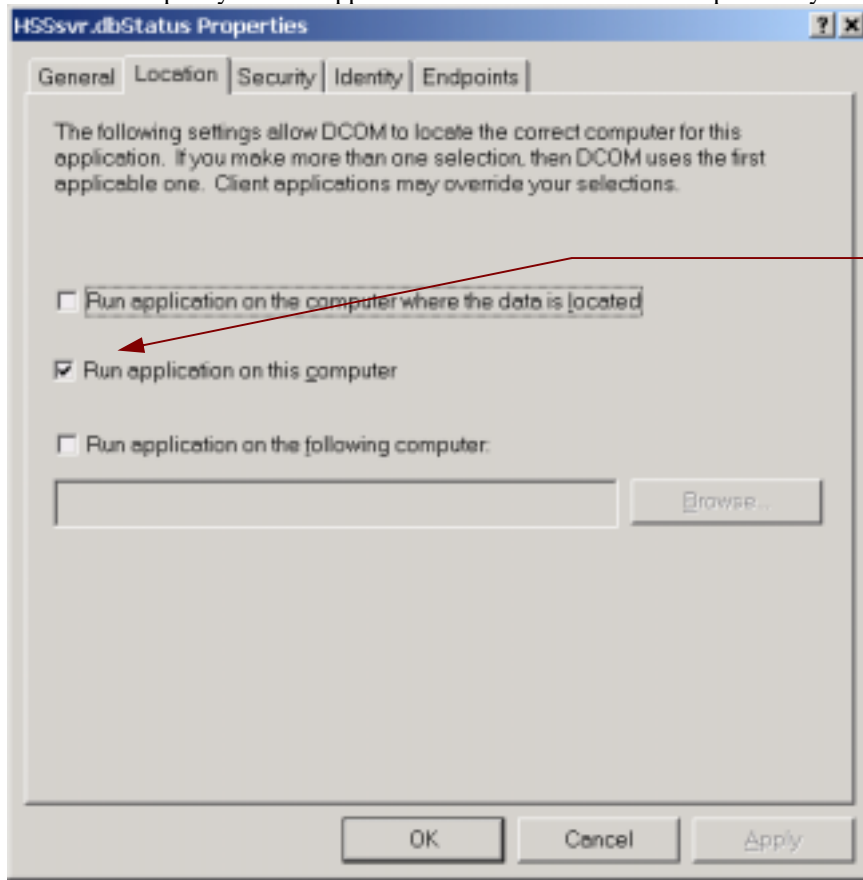


Figure 3 - HSS Server - setting authentication level

HSS Networking Guide

DCOM HSS application location:

Make sure to specify that the application should run on THIS computer only.



Make sure this is the ONLY checkbox that is selected.

Figure 4 - HSS Server – location setting

HSS Networking Guide

DCOM HSS HSS Server Launch and Access permissions

These screens let you specify who can access and launch the HSS server from workstations. To make it simple to set up, we will specify the “Everyone” user group to which all users are members. *Note that this may not be appropriate in large computer networks for obvious security reasons.*

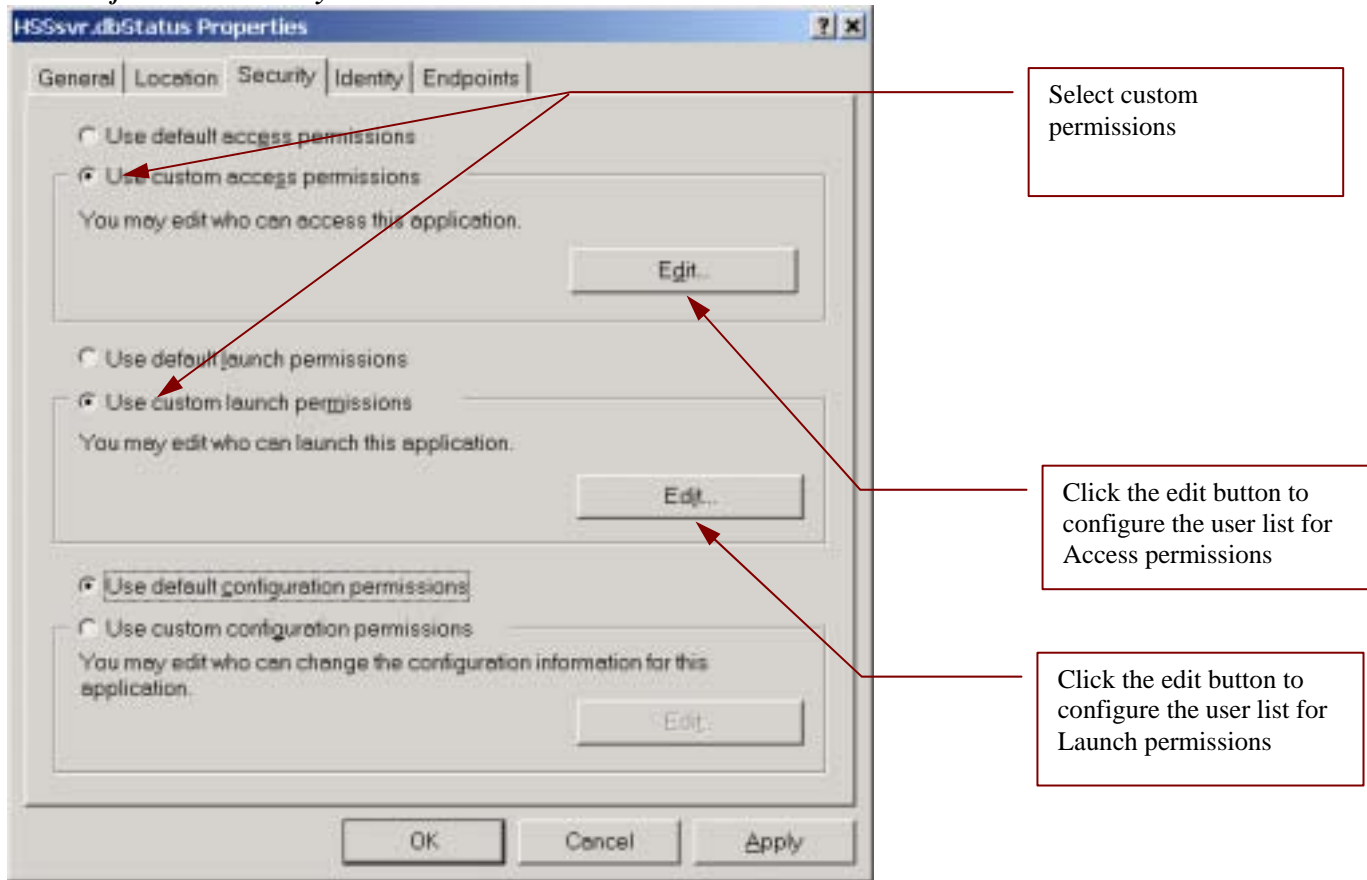


Figure 5 - HSS Server launch and access permissions

HSS Networking Guide

Settings for “Access permissions”, and “Launch permissions”.

These two screens are displayed when you selected the edit button on the Security tab (previous screen). Use the Add button to select entries that match those in the screen shots.

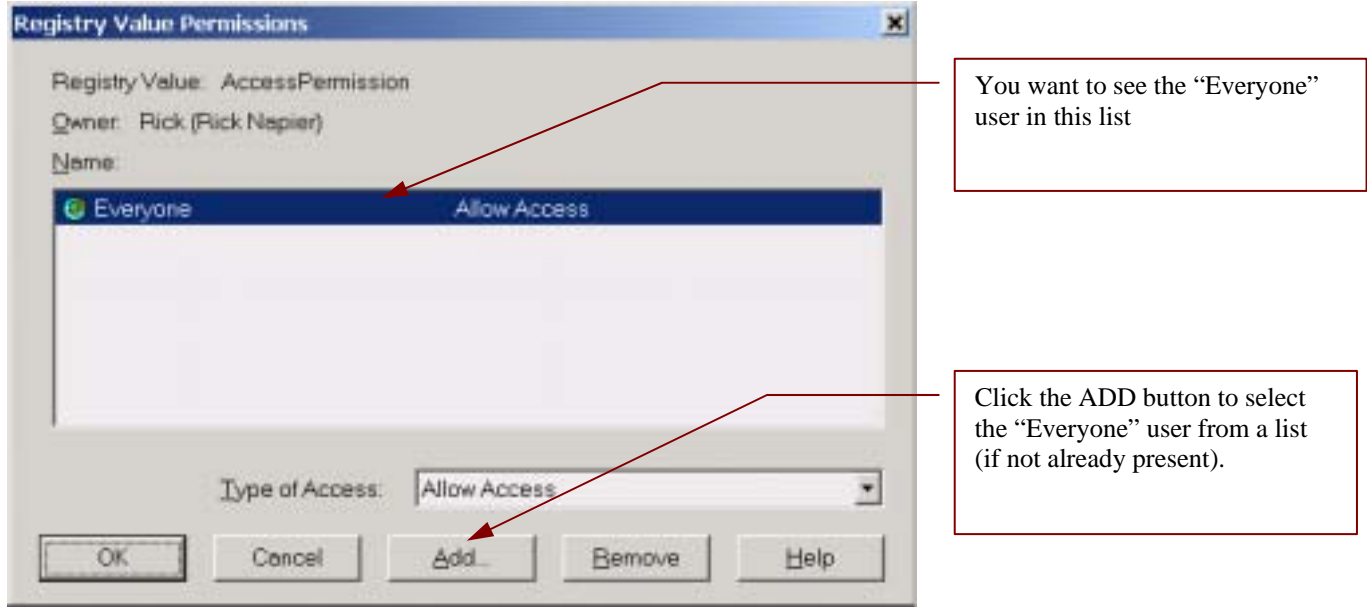


Figure 6 - HSS Server – Adding the “Everyone” user group to the Access permissions list

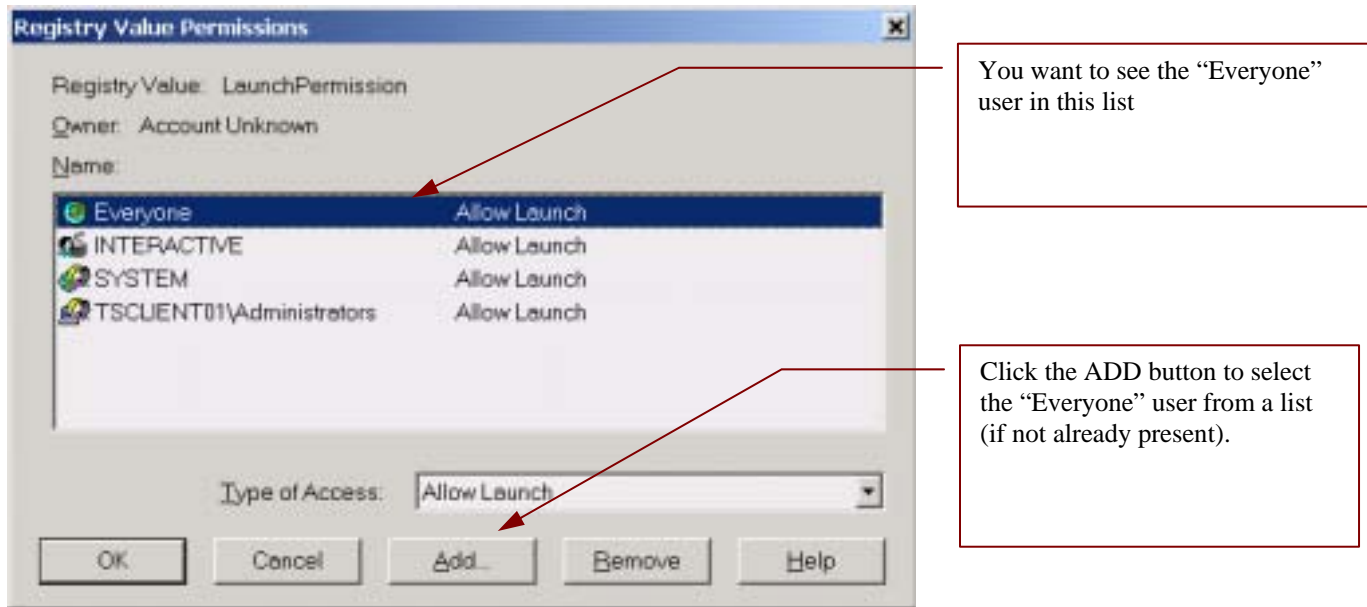


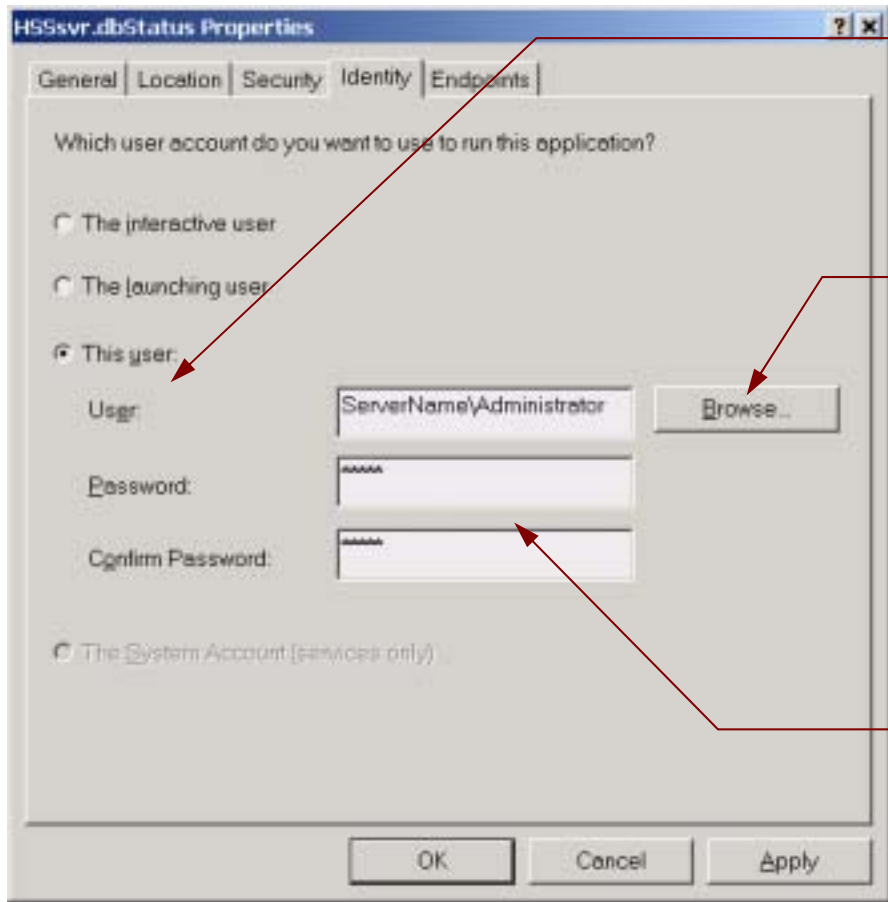
Figure 7 HSS Server – Adding the “Everyone” user group to the Launch permissions list

HSS Networking Guide

Setting the Identity under which the HSS Server runs.

This is **VERY IMPORTANT**. Select the Identity tab, and configure it as shown below.

Click the browse button to select the "ServerName\Administrator" for your machine. The "ServerName" will be the name you have given your computer. We highly recommend you use the ADMINISTRATOR user on the Server to ensure the HSS server has full access to the system.



ALWAYS select the "This User" option.

Failure to correctly do this will cause incorrect operation and possibly corruption of your data.

Use the browse button to select the "Administrator" user on the Server computer. ServerName will be replaced by the name of the Server computer.

Enter the password for the Administrator account on the Server computer.

Figure 8 - Setting the Identity under which the HSS Server runs

Finally, click the Apply and then the OK buttons to save all the changes.

Then click the OK button on the main DCOM configuration screen to save and close the DCOM configuration utility.

HSS Networking Guide

Accessing the HSS server from your client workstations:

HSS allows you to work with a database located on the local workstation or on **ANY PC that has HSS installed** and has the appropriate DCOM settings as shown above.

To access the HSS server of your choice do the following:

1. Start HSS on the client PC
2. HSS *may* indicate that no show exists yet and ask you if you want to create one. If it does, simply Reply "NO" since it is asking if you want to create a show on the local PC.
3. In the "Open Show" form, click the "Change Server" button. This will allow you to tell the workstation PC where the HSS server is located that you want to access. Note that you can configure multiple HSS servers on your network!
4. When you are prompted for the server address, you can either enter the name of the Server computer OR the TCP/IP address of the server computer.

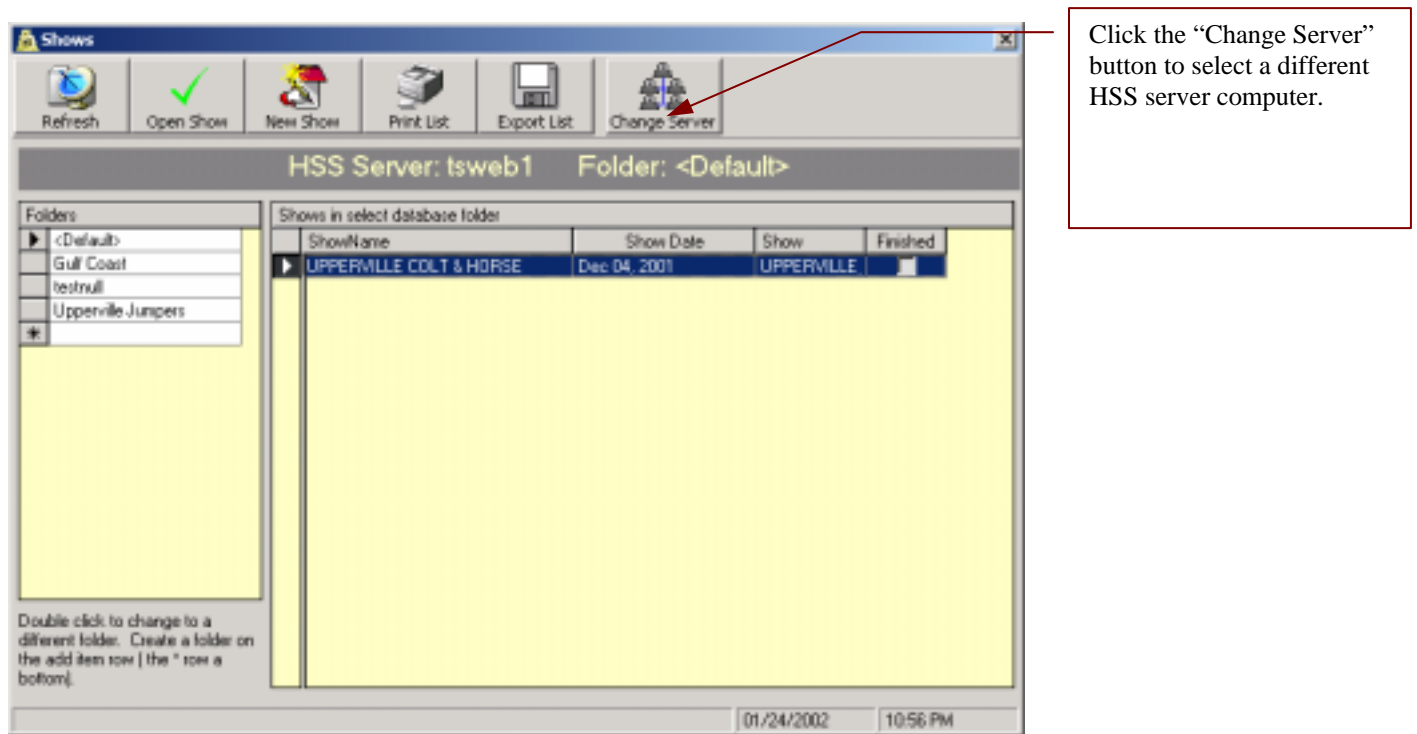


Figure 9 - Changing the HSS server in use by a workstation